

**The Upper Paleolithic  
&  
Anatomically Modern Homo sapiens**

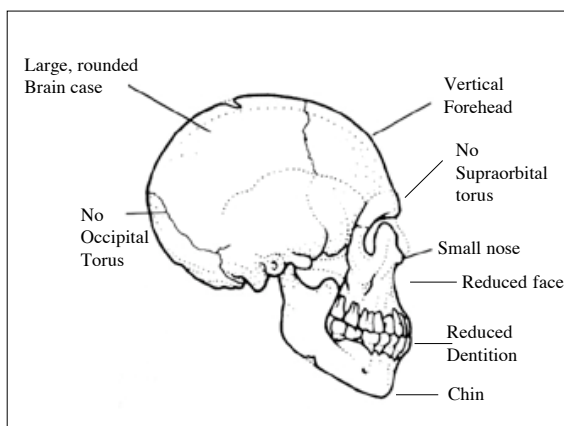
Anatomically Modern Homo sapiens Stage 90,000 ya to present Physical Characteristics

General reduction in the robusticity of the Post-cranial skeleton:

- Reduced bone mass
- Reduced musculature

Differs from Neandertal (archaic) forms in **shape of skull** and **size of face and dentition**.

Cranial capacity: 1350-1450 cc



Oldest Evidence to Date For AMHS  
The Herto Skulls  
Herto, Ethiopia  
160,000 y.a.

**NEXT OLDEST EVIDENCE OF AMHS**

Mt. Carmel, Israel: Skhul, Tabun, Qafzeh Caves  
Perhaps 92,000 years ago

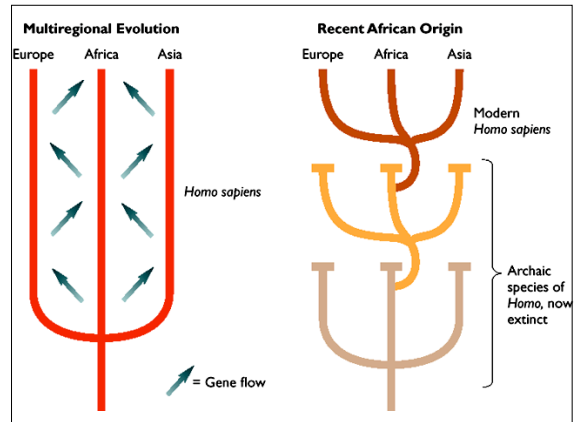


Border Cave, South Africa  
Perhaps 90,000 years ago

Klasies River Mouth  
90,000 years ago?

AMHS is not found elsewhere in the world until  
AFTER  
40,000 years ago.

MEANING?



**Hominid Evolution Cultural Periods**

The Australopithecine Stage 4.5 mya to 1 mya	
The Early Homo ( <i>H. habilis</i> ) Stage 2.6 to 1.5 mya	Lower Paleolithic Oldowan
The Homo erectus Stage 1.8 mya to 400,000 ya	Lower Paleolithic Acheulian
Archaic Homo sapiens Stage 400,000 to 35,000 ya	Middle Paleolithic Mousterian
Anatomically Modern Homo sapiens Stage 90,000 ya to present 40,000 ya	Upper Paleolithic

**THE UPPER PALEOLITHIC**  
40,000 - 15,000 years ago

- Broader subsistence base
- Higher population density
- Larger sites
- New technology
- Greater social complexity
- Wider trade
- Art

**Shelters**

- Caves and rock shelters
- Construction of more complex shelters
  - Huts
  - Mammoth bone houses
    - Central & Northeastern Europe

**Mammoth Bone Shelters**

Mehzirich, Russia

UPPER PALEOLITHIC TECHNOLOGY

New techniques and tools

Bone / Ivory / Antler Tool Industry

Atlatl (Spearthrower)

Punch Striking

New Technique

The Prismatic Blade

•Pressure flaking to refine and shape

Blades  
Burins  
Gravers  
Projectile points

Bone / Ivory / Antler Tool Industry

- Harpoon points
- Fishing devices
- Projectile points

Upper Paleolithic Europe  
Local Cultural Traditions

Aurignacian Tradition: 34,000-27,000 y.a.  
•Burins and retouched blades

Gravettian Tradition: 27,000-21,000 y.a.  
•Smaller blades and denticulate knives

Solutrian Tradition: 21,000-16,000 y.a.  
•Bifacially flaked, leaf-shaped points

Magdalenian Tradition: 16,000-11,000 y.a.  
•Bone and antler tools

**The Atlatl**

The Upper Paleolithic gives us our first evidence for

**ART**

- Decorated tools
- Figurines
- Personal ornaments of shell, stone, ivory
- More elaborate grave goods
- Cave paintings

Upper Paleolithic Figurines

- Ivory
- Bone
- Fired clay
- Stone
  
- Various animals
- Human females

Are the little females fertility figurines?

Personal Ornaments

- Beads
- Pendants
  
- Shell
- Bone
- Ivory

**More Elaborate Burials**

Grave Goods

- More elaborate
- Jewelry
- Other offerings

**Sungir, Russia**

Cave Art

- Painted
- Carved
- Modeled
  
- Non-occupation caves
- Deep dark recessed areas
  
- Religious
- Initiation rituals
- Decorative

### Types of Lamps

- Burned lump of animal fat
- Wick
  - Lichen
  - Moss
  - Juniper

Earliest known date to about 40,000 years ago.

During the Upper Paleolithic, humans moved into virtually every habitable part of the earth.

- To Australia
- By 50,000 or more years ago
  - By boat

### To the Americas

- Controversy
  - 12,000 years ago?
  - 30,000 years ago?
- Bering Land Bridge

Clovis Points

Folsom Points

### Some Upper Paleolithic Sites to Remember

- Klasies River Mouth, South Africa
- AMHS remains
  - Early blade industry
  - Bone projectile points
- Katanda, Congo
- Early bone tool industry

### Important Upper Paleolithic Sites: Mammoth Bone Shelters

Mezhirich, Ukraine

Dolni Vestonice, Czech Republic

Dolni Vestonice: 5 structures

- Windbreaks
- Roofed huts

House Floor

27,000 year old fingerprint in fired clay chunk

Clay "oven" for firing figurines found in one structure.

Other Important Paleolithic Sites

Most Famous Cave Paintings

- Lascaux, France
- Chauvet Cave, France
- Altamira, Spain

Lake Mungo, Australia

- Oldest skeletal material

Two Interesting and OLD Sites in the Americas:

Monte Verde, Chile

- 13,000 years ago

Meadowcroft Rock Shelter, Pennsylvania

- 12,000 - 19,000 years ago

Monte Verde, Chile Artifacts

Hearthstone

Knotted reed twine found binding 2 timbers.

Basalt point

Slate "drill"

Mastodon ribs probably used as fire pokers.

Meadowcroft Rock Shelter, Pennsylvania