

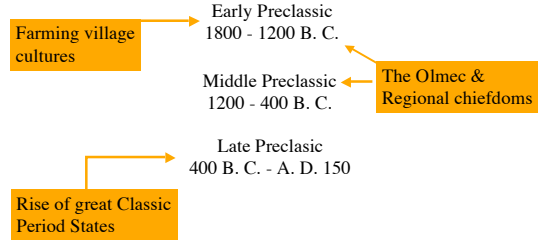
Foundation for farming village way of life laid down during
ARCHAIC PERIOD

Between 5000-2000 B.C.

- Gradual adoption of sedentary village life
- Maize became staple
- Egalitarian and autonomous villages

By 1800 B.C. **THE EARLY PRECLASSIC:**

The Preclassic Period
1800 B. C. - A. D. 150



Earliest evidence for permanent villages by about 2000 BC

• Lowland zones and on coasts

- Chiapas & Guatemalan Pacific Coast: Soconusco
 - Ocos culture
 - Mokaya culture
- Mexican Gulf Coast/Olmec zone
 - West coast of Mexico: Acapulco
 - Puerto Marquez

Barra Pottery
Sophisticated tradition
1600 + BC

Pox Pottery
Fiber-tempered
2300 BC?

By 2000 B. C. the Preclassic Mesoamerican
village pattern beginning to be widespread.

- Sedentary village
- House groups about patio
- Pottery making
- Loom weaving
- Clay Figurines
- Public architecture

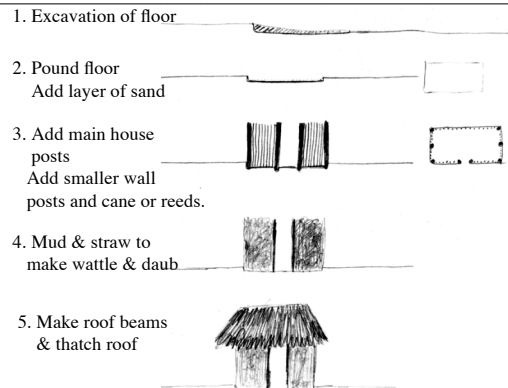
The Early Preclassic
1800-1200 B. C.

Villages

- Small hamlets
- Communities of several hundred people

Houses

- One room
- Thatched roof
- Wattle & Daub



The Mokaya Culture of the Soconusco **Mixe-Zoquean speakers?**

2000 - 900 BC

Some Soconusco "firsts" before 2000 BC

- Permanent villages
- Pottery
- Oldest hierarchical societies: Chiefdoms

Olmec connection by Middle Preclassic!

Paso de la Amada

Mound 6 chief's residence?

- 1600-900 BC
- Chiefdom
- 123 acres
- 1500 in village
- 4000 + in hinterland
- 50 + earthen platforms

Oldest known ball court!

Early known use of chocolate!

Other Important Early Preclassic Sites

San Jose Mogote, Oaxaca

- 6 miles from Monte Alban
- Village of 600
- Typical houses

Other Early Preclassic Village Sites

Tlatilco

Stirrup Spouted pottery

- Valley of Mexico
- Excavated in 1930s
- Hundreds of burials



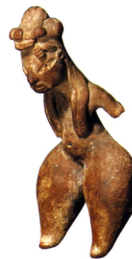
Reconstruction of Tlatilco burial in National Museum



Tlatilco's ceramic figurines

•"Pretty Ladies"

•"Acrobats" & Ballplayers



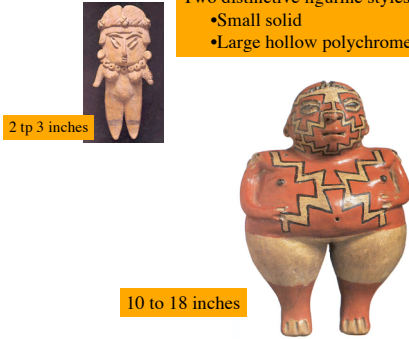
Olmec Influence Middle Preclassic

Chupicuaro, Guanajuato

Burial site is best known.

Two distinctive figurine styles:

- Small solid
- Large hollow polychromes



2 to 3 inches

10 to 18 inches

Preclassic Village Cultures of West Mexico

Mexican states

- Jalisco
- Colima
- Nayarit
- Michoacan

Earliest village farmers

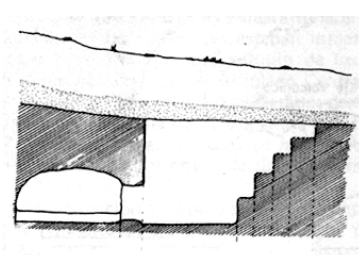
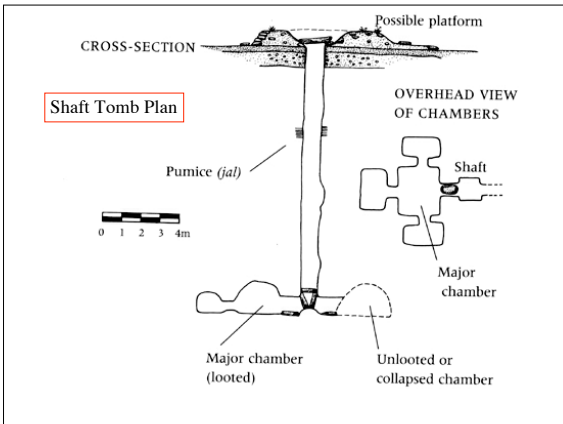
- Colima coast
- Capacha complex
- 1450 BC
- Bottles and stirrup jars
- Tlatilco-like figurines

The Shaft Tomb Burial Complex

Earliest: 1300 + B.C.

The El Opeño Tombs

- Related to Capacha
- Related to Tlatilco
- South American connections?

Shaft Tomb Cultures

- Not well known archaeologically
- Ceramics are famous
- Large hollow figurines
- Small solid figurines
- Polychrome pottery
- Conch shell trumpets

Small Ceramic Sculpture

- House models
- Village scenes
- Ball games and other rituals

Teuchitlan, Jalisco

Round Ceremonial
Center like Models