

WEEK 7, CHAPTER 6 NOTES

via the nimble fingers of Nancy Carroll, edited by Barbara Heiman

We miss you Rick, so we will postpone the cheese until next week when you are here, 11:30 am in the Quad on October 12.

Assignment clarification (Barb): see the Assignment page on the class site—clarified there.

TODAY'S LOOK AT WEB GRAPHICS

Animated gifs...“like changing your oil filter with tweezers”

Flash is really the right product for big animation

ImageReady Animations are okay for little some things that moves on your website, otherwise use Flash...vector based will be smaller file

The animated gif we did last week was fun but in real life, keep colors as limited as you can to minimize file size.

CIS PHOTOSHOP AND RELATED COURSES NOW AND IN FALL 2007

Class #1 is 73.21 Intro

Class #2 is 73.22 Intermediate

Class #3 is 73.23 “Advanced” Concepts

THESE FIRST THREE COURSES GIVE YOU THE CURRENT CIS MASTERY CERTIFICATE IN PHOTOSHOP

Class #4 is 73.24 Restoration/Photo Correction (aka Fixing Images with Photoshop)

Class #5 is 73.25 Projects (developing your web and print portfolio) is a new course that will be taught for the first time next fall, using Photoshop CS3 (to be released some time

in Spring 2007). Beginning Fall 2007, the SRJC Photoshop certificate will require all five classes (17 units)

There are also 2 8 week Web Graphics classes that will be offered again Fall 2007. HTML 1 is a prerequisite.

CIS 58.53A Web Graphics Projects

CIS 58.53B Adv. Web Graphics

Question on Upgrades to new version, whenever it comes out. (Adobe says some time in spring of 2007.) Barbara wasn't sure... maybe most economical is to get education version on Suite compared to Upgrade from education to full.

Week 7 class files are on Petchaos'(M)...CIS...CIS 73.23... Student_Files_3...Week 7..bring over whole Week 7 folder(Copy to Thawspace Paste)..5 files in the folder..

Open PS...(vs...ImageReady). Chap 6 CD Notes you will see the differences. We can build an Image Map and Build Rollovers.

STRATEGY FOR BUILDING WEB FILES WITH REMOTE ROLLOVERS AND/OR IMAGE MAPS

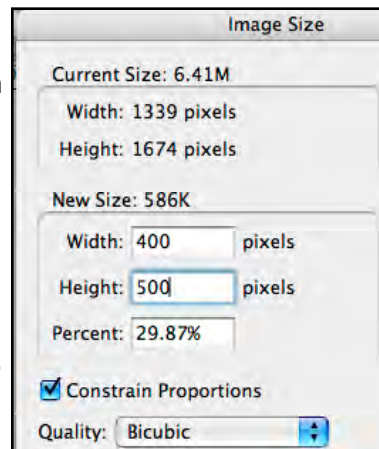
1. Start in PS to create files because PS has the basics, more editing tools.
2. Create all of the layers and layer sets for the different states you will need, and save your document in PSD format.
3. Jump to ImageReady to finalize the web-specific parts of your files.
4. In ImageReady, slice your PSD file if necessary, optimize the slices for the Web, and make your JavaScript rollovers and image maps.
5. File > Save to update the source PSD file once you have made the web enhancements. (You cannot be in Preview mode to do this.)

6. Save Optimized As in a new folder to hold the HTML, Image folder, and other associated Web files that ImageReady creates.
7. If you do not have your own web site, you will zip this folder and upload it to the correct assignment inbox to submit your work.

HOW TO MAKE THE MICKEY MOUSE REMOTE ROLLOVER

Barb stepping in here: Follow these steps to follow to turn the Fireworks image we worked with last week into an animated GIF with remote rollover. It is not quite what I did in class, but should be easier to follow.

1. In Photoshop, open Fireworks.psd. If the font is missing (Photoshop will warn you), change the font of the type layer to one you like.
2. Duplicate the image and save the duplicate. In class, I named it Fireworks_rollover.psd.
3. To conserve RAM, close the source file (with or without saving; it's up to you).
4. Choose Image > Image Size to check the file size. 1339 x 1674, has way too many pixels to view in a web browser without scrolling.
5. With Resampling checked, reduce the vertical size of the image to 500 pixels. Its width will change to 400 pixels with Constrain Proportions checked. Now it will fit in a web browser without scrolling. (In class we tried 600 pixels first, but it didn't fit.) We used



Interpolate: Bicubic Sharper. You can pick the interpolation method you like best.

6. Double click the Zoom tool to bring to 100% view.
7. Add a layer style to the type layer (Ooh! Aah!) to change its appearance. For example, bevel and emboss it, and add a color overlay. This will be your mouse-over state for the type.
8. Turn off the layer style visibility from the Layers palette (you don't want to see the layer style in the initial view).
9. Open Mickey2.gif. (It's in the week07 folder in the lab.)
10. Choose Image > Mode RGB to change the mode of Mickey2.gif from Indexed Color to RGB. (You typically can't combine images with different image modes.)
11. With the Move tool, drag Mickey onto the Fireworks image, and place him just above the type in the right corner of the image.
12. Close Mickey2.gif without saving.
13. Name the new layer Mickey, add a layer style to it that makes Mickey just an outline, and also reduce the layer opacity so that he is much less noticeable. (I used a gray color overlay with a bevel and emboss effect, and reduced opacity to around 40%). Leave this effect visible, because it will be your starting state.
14. Save the document, and jump to ImageReady using the button at the bottom of the toolbar. You can now toggle between PS & ImageReady.. seeing your file in each one. End up in ImageReady.
15. Choose Window > Workspace > Default Palette Locations to see Palettes available in ImageReady. ...full slice palette available, also Image Map and Table palettes, a new palette

called Web Content, next to Color Table; Layers, History, Actions together..

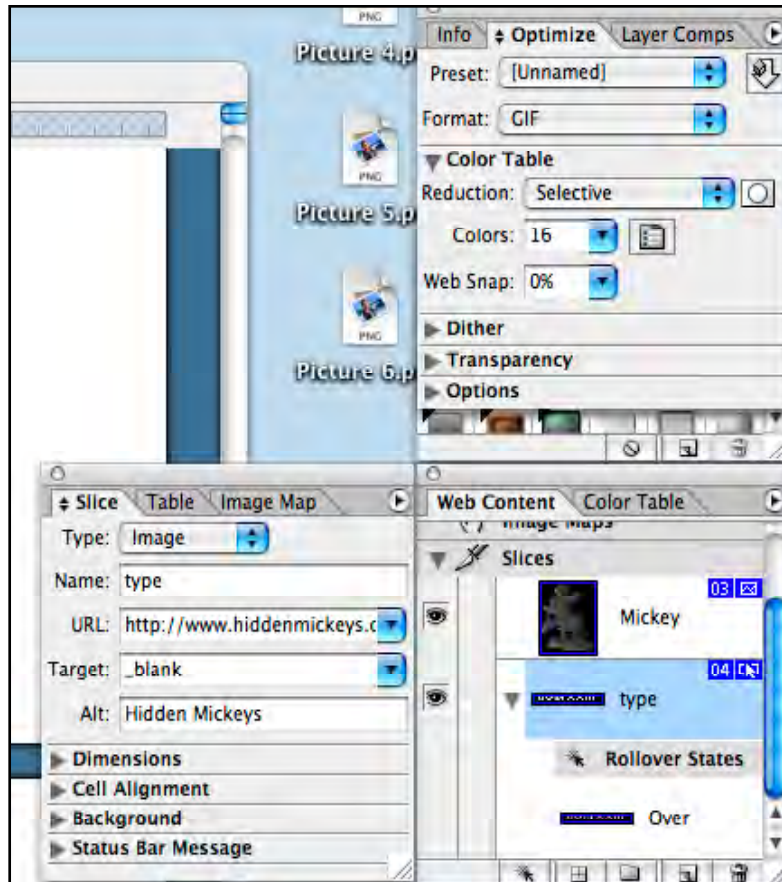
16. Zoom out so that you can see some of the document window beyond the image itself. To Zoom out, choose Cmd/Ctl (-)...since there is no Navigation Palette in ImageReady. Cmd/Ctl (+) Zooms in. These also work in Photoshop.
17. Choose the Slice tool. Image Ready separates the Slice and Slice Select tools, be sure to pick the Slice tool on the left side.
18. Drag diagonally from below the right side of the document to the left to make a slice that just includes the type, and release the mouse. You now have 2 slices: the lower User Defined slice and the upper Automatic slice.
19. With the Slice tool, make one more slice that begins just above and to the left of Mickey, and drag down and right to make a slice that includes Mickey and ends up at the edge of your first user defined slice. ImageReady will make another Automatic slice to the left of the Mickey slice, so your document should now have 4 slices total. If you have more, you didn't get the slices in the correct locations. Choose Slices > Delete All to get rid of slices to start over.
20. Look at the Web Content palette. It has two generically named used-defined slices. Click on the one that contains the type, activate the Slices palette, and rename the slice "type."
21. Back in the Web Content palette, click the slice that contains Mickey, go back to the Slices palette, and rename that slice Mickey. Notice that you can now use the Web content palette to select either one of your user defined slices. Using this technique instead of the Slice Select tool avoids accidentally



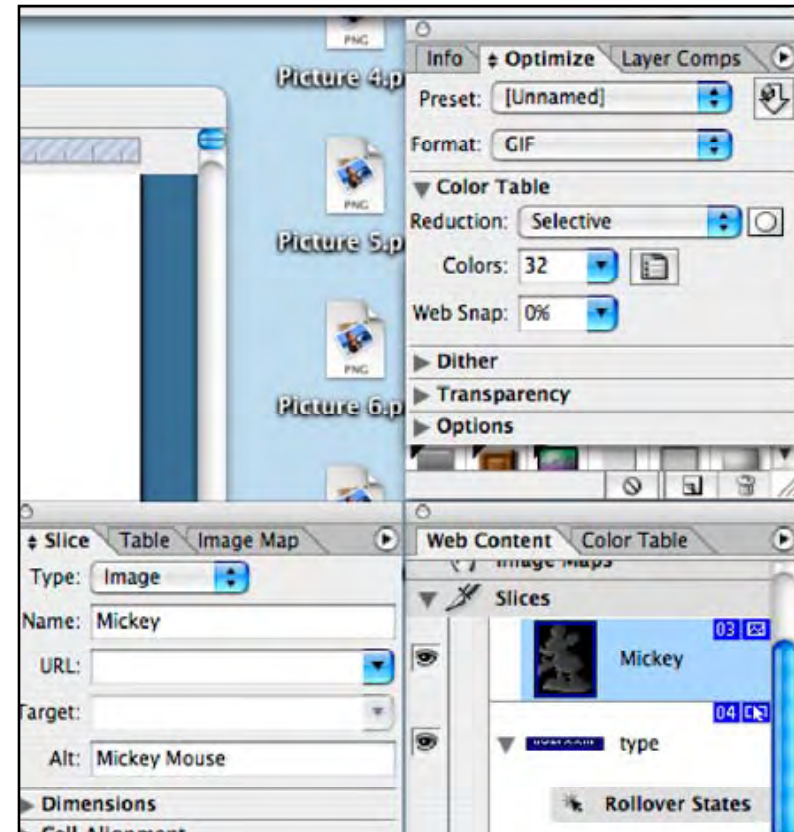
moving a slice as you select it. If you move a slice, you can end up with unwanted extra automatic slices.

22. In the Web Content palette, activate the Type slice.
23. Click the Create Rollover State button at the bottom of the palette. Now you have a (mouse) over state, but it is exactly the same as the original. Be sure the Over state is active in the Web Content Palette.
24. In the Layers palette, turn on the visibility of the "Ooh! Aah!" layer style and turn off the visibility of the Mickey layer style and restore its visibility to 100% so that you see Mickey. (Mickey may or may not display these settings in the document window, but don't worry, we'll fix that soon.
25. This is a good time to update the saved file by choosing File > Save or Command/Ctrl + S.
26. Click the toggle Slice Visibility to hide the slices, and click the Preview Document button to try out your remote rollover as it will appear on the Web. (These buttons are just below the Foreground/ Background swatches.) Notice that when your mouse is over the type, it changes color, but Mickey does not change. The rollover is working, but not the remote part.
27. Turn off the Preview Document button so that you can continue to edit your document. With the Over state active in the Web Content palette, choose Find Remote Slices for State from the palette menu, and click OK when a dialog box appears. This step links any remote slices to the active one.
28. Preview again to be sure your remote rollover now works.
29. Optimize the slices as shown here.

30. Save the document.
31. Make a new folder where you want the web files to appear, choose Save Optimized As, and save the HTML and image files to that location. Here are the settings I used:
Type slice settings



Mickey slice settings



The two automatic slices were selected and optimized as medium JPGs.

THE REST OF NANCY'S NOTES:

Save it since it is break time.....

Boy this is very difficult taking notes...my wrists are getting sore....

Over break I saw a variety of things...

ImageReady..File>Save..only have Save Optimized and Save

Optimized As..need to toggle out of Preview mode to get back to full range of save options..save as...

Next: if you made your original slice(user defined slice) at the top...here's how to change it...make both slice into User Defined Slices..you'll see in the Web Content Palette both these slices... then you can toggle betw the 2 slice to make one or the other

Activate Automatic Slice>Slice>Promote to User Slice

Control our slices (turn off preview), go thru to set document up for the web...

In ImageReady, make slices, regular state, rollover state... prepare for the web...

Use Optimize Palette and the Slice Palette:

Slice Select Tool: Gif format..Optimize: Gif 32 no dither, Color: 16

Go to site: <http://www.hiddenmickeys.org> so the next time you go to D you will know where he's hiding...

Type: Image

Name: the Slice OOH AAH (in the Slice Palette)

URL: <http://www.hiddenmickeys.org>

Target: _blank

Alt: ooh aah (HTML,web standards, decent code)Alt Tag is what shows up on the page when your curser crosses the image.

Slice for Fireworks

Name: fireworksrollover_03

Alt: Mickey Mouse

Optimize Palette.

Format: Gif

Selective

Colors: 32

Or change to Jpeg instead

Quality: Medium

Back to Slice Palette

Chg Alt to: fireworks

Want to see how it looks on web, diff browsers...

Button that looks like Internet Explorer will bring it up for you to test if it works. Button is on the lower part of the tool bar.

Saving:

Give ImageReady a folder for everything to go in: Barbara used: hidden_mickeys

Save as type: HTML and images

Inside this folder will be the HTML file and the Images FOLDER

Windows folks: Don't use PK Zip to prepare your files because it doesn't include folders without special configurations. XP has a built-in zip utility...rt ck..Send to...compress folder

Mac folks: Right or ctrl+click the source folder and choose Create Archive of... to make a zip file.

Go to Slices (with in file with type, mickey just above type)

Delete All (slices)

Make Slices (window not maximized, must have some gray space around image)

With slice tool 1) slice type from bottom rt corner to left above type 2) from rt bottom just below Mickey, slice upward toward left top corner of Mickey (have 2 user defined slices and 2 automatic slices – can only use Web Content Palette.

On User Defined Slices) Web Content Palette: acive is the fireworksrollover_3 (for the Mickey layer/slice) Make sure you

can see the effects list on the Mickey Layer on layer palette.

You should have Active the "fireworksrollover_3 in the Web Content Palette AND the Mickey layer in the Layers Palette.:

In the Web Content Palette. Click the "Create Rollover State" button at the bottom of the palette, next to trash can. This gives you a second state in that palette named: OVER

Go back to layers palette. And turn OFF the "effects" eyeball to reveal the colorful Mickey.

Now you can toggle between orig. Mickey and the effects Mickey by clicking the 2 diff. bars in the Web Content Palette.

Let's do the same steps for the OOH AAH slice by repeating these steps, making sure you are ACTIVE on the Ooh Aah slice in the Web Content Palette and the Text layer in the Layers palette with the effects OFF to start.

create rollover state and turn the effects ON

Homework:

Check the class Assignments sheet for most current version on this week's assignments.

Next week a 8 wk review – no new material at the end of the week take an online test from the test bank to total 30 questions. Use forum to start review online, let Barbara know what we want reviewed next week in class. Online class has been invited to attend if they wish.

See forum for corrected notes for rollover in Chap 6.

Rick, you know we didn't get cheese today because you weren't here. Boy am I hungry...

Looking at Donald Laird's website: <http://www.donaldlaird.com/landmarks/> scroll down for the state of CA with the counties, no alt tags but at the bottom you see co. name, etc. This shows

how helpful Alt Tags are to the viewer.

Back to work at hand: Guided Exercise 6.1 on page 77 of CD Notes

Get to chapter 6 files. Rt clk or ctrl clk to copy file and take it back to thawspace: map_start.jpg

we are in ImageReady

use Rectangular(also Circle and Polygon) Image Map Tool (under slice tool) to select upper rt tile (and each successive part of image) and give it a URL using the Image Map Palette. Target :if you choose _blank then the url will open as its own window.

Keep doing this process to give URL to different spots in the image.