



# insider

Staff News for Santa Rosa Junior College, June 4, 2010

## *President's Address to the Community*

On Thursday, May 27 from 11:00 AM to 1:30 PM, more than 375 people attended the "18th Annual President's Address to the Community" in the Walter Haehl Pavilion on the Santa Rosa Campus. Hosted by the SRJC Foundation Board of Directors and President Dr. Robert F. Agrella, the successful event included a catered luncheon, Dr. Agrella's "State of the College" address, and the presentation of "The President's Medallion" posthumously to Dr. George S. Payne in recognition of his outstanding service and support of SRJC. Mrs. Marilyn Payne accepted the award on behalf of her late husband. *Photos by Angelica Tercero*







## Digital Arts and Media Grant

### Why Digital Media?

High Need/High Wage-38% of US game companies in CA

One third in SF Bay Area

Strong employment growth: 14% in Bay Area region

Entry level positions do not require a BS/BA degree

Digital media skills in occupations in broad industry sectors









## Summer Payroll Information & Update

### SUMMER SCHOOL PAY DATES FOR FACULTY AND ADJUNCT FACULTY:

Pay Period: May 24 - June 30 will be paid on July 8 after 2:00 PM

Pay Period: July 1 - end of summer school will be paid on August 10

Timesheet Deadlines - NO EXCEPTIONS will be made to the due dates

### TIMESHEET PAY PERIODS FOR CERTIFICATED EMPLOYEES (YELLOW TIMESHEETS):

May 21 - June 20 will be paid on July 10 - Timesheets will be due to Payroll by June 21

June 21 - July 20 will be paid on August 10 - Timesheet will be due to Payroll by July 21

### STNC TIMESHEETS

May 10 - June 9 timesheets are due no later than 10:00 AM on Thursday June 10. If an employee has stopped working prior to June 9, please submit the timesheets sooner.

June 10 - July 9 timesheets are due no later than 10:00 AM on Monday July 12. If an employee has stopped working prior to July 9, please submit the timesheets sooner. Note: An approved PAF must be on file for all work effective July 1, 2010.

### STUDENT TIMESHEETS

May 15 - June 14 timesheets are due no later than 10:00 AM on Tuesday, June 15. If your student has stopped working prior to June 14, please submit the timesheets sooner.

June 15 - July 14 timesheets are due no later than 10:00 AM on Thursday, July 15. Please submit your timesheets sooner if your student has already stopped working.

## SRT Offers Faculty & Staff Flex Plan For 2010 Performances

SRT offers SRJC Faculty and Staff a 2010 Flex Plan for the summer season at the bargain price of \$5.00 each (limit 2). Each Flex Plan is good for five tickets! You can enjoy another amazing SRT Season that will present the following performances:

**FOREVER PLAID**

**PETER PAN**

**THE 24TH ANNUAL PUTNAM COUNTY SPELLING BEE**

**DANGEROUS LIAISONS WITH VAMPIRES**

**THE FULL MONTY**

The special Flex Plan is for Tuesday, Wednesday, and Thursday performances only. To take advantage of this offer, go to the Box Office in person with staff ID. If you have not been issued an ID card, print this page of the *Insider* and bring it with your driver's license to the SRT Box Office in Burbank Auditorium Lobby. Please call 527-4307 with any questions. The Box Office is open Tuesday through Sunday from noon to 8:00 PM; closed on Monday. Visit SRT at [www.summerrep.com](http://www.summerrep.com) for more information about the upcoming summer season, including a performance calendar.





## Join Shone Farm's Community Supported Agriculture

In two weeks, the SRJC Shone Farm Community Supported Agriculture (CSA) program will begin to deliver summer boxes of farm-fresh food raised by SRJC student farmers from the Sustainable Agriculture Program.

As a member of CSA, you will receive each week during summer a share of the produce that's ripe and ready to eat. Produce ranges from asparagus to zucchini to many other delicious vegetables. No pesticides, herbicides, or fungicides are used on the produce. A typical summer share will feed two to three people with a mix that might include: salad greens, heirloom tomatoes, summer squash, sweet corn, cucumber, melon, and strawberries.

**Cost:** \$240 for the ten-week summer season (you may pay in two installments of \$125 each).

**Dates:** Weekly June 14 - August 16

**Pick Up:** Tuesday or Thursday on the Santa Rosa Campus

**Location:** TBA

You can also bring your own bag to the farm pick up your produce. There are no refunds or credits for missed pick ups.

So, don't delay! Join CSA today and support this wonderful student-driven enterprise. Your support of CSA is appreciated!

## Shone Grown Free Range Chicken Available

Shone Farm offers another new product, free range, all natural chickens raised on the Shone Farm's lush, green grasses. The chickens are raised without antibiotics or hormones, and are in limited supply. Once you try this chicken, you'll never go back to store-bought chicken.

The average weight of the birds is about four pounds. Chickens will be sold whole at \$5.00 a pound. Checks should be made out to "SRJC Foundation" and included an order form. Send checks and order forms with deposits to the Shone Farm by inter campus mail or mail to:

Shone Farm in the attention of Ben Leacox, at  
7450 Steve Olson Lane, Forestville, CA 95436.

For more information, please call 887-1187. Questions can be sent to [guser123@santarosa.edu](mailto:guser123@santarosa.edu)

**THE BIRDS CAN BE PICKED UP AT SRJC SHONE FARM FRESH ON THE DAY THEY ARE PROCESSED**, or delivered to the Santa Rosa or Petaluma campuses frozen. Payment in full must be made at time of pick-up via check. There will be several opportunities throughout the summer to get farm-raised, local, wholesome chicken. The first delivery is expected to be June 20, followed by another on July 10.

### SRJC SHONE FARM FREE RANGE CHICKEN ORDER FORM

Number of birds desired:

Pick-Up (Fresh):

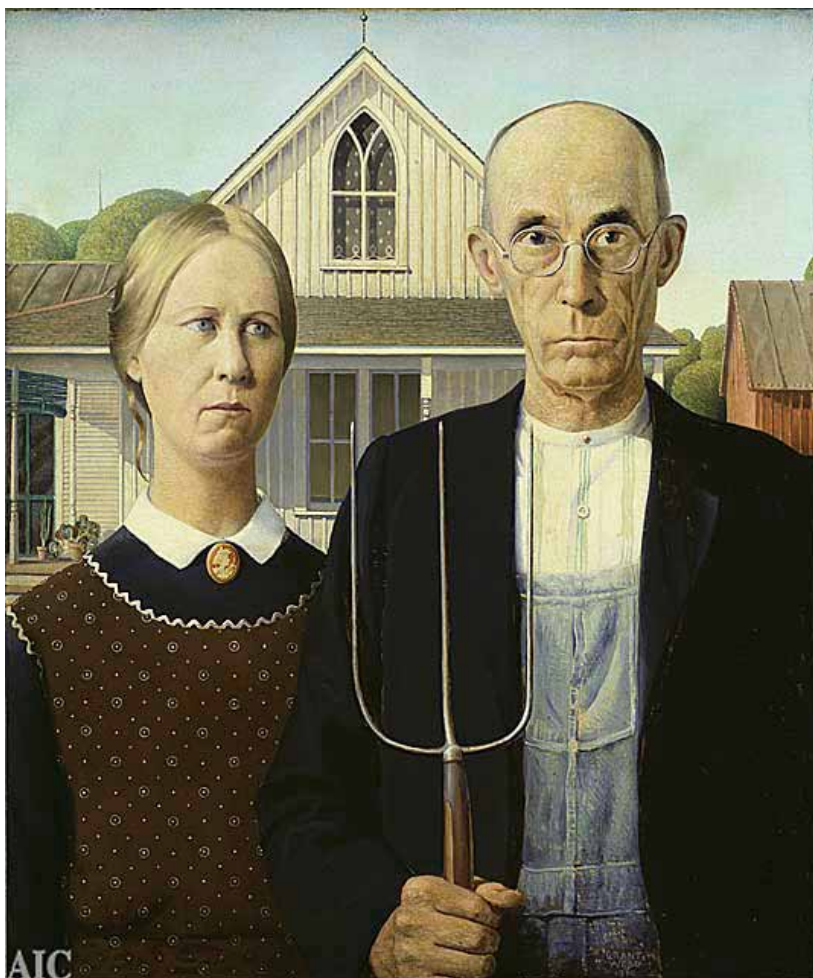
Deliver (frozen) note which campus

Name

Address

Phone Number

Email





## Sign Up! Italian Language & Culture Study Tour June 26-July 17

The 7th Italian Language and Culture Study Tour for SRJC students, coworkers, family, and friends has been scheduled this summer between June 26 and July 17 in Urbania, Le Marche in the beautiful Apennine Mountains, central to the most important art and cultural centers of Italy. It is not too late to sign up, discounts still apply, and the dollar/euro exchange is looking better each day. For faculty members, brief presentations are available to your classes about this exciting opportunity, plus special study transferable credit, such as Italian 49, is available to your students. Call ext. 4886. Click the following link to see why Urbania is "Civilization Central." <http://www2.santarosa.edu/f/?18547>.

## Remember to make your reservations now for the August 13 Chamber Education & Business Partnership Breakfast.

The Santa Rosa Chamber of Commerce and Pacific Gas & Electric Company will hold the "24th Annual Education & Business Partnership Breakfast" on Friday, August 13 from 7:00 to 9:00 a.m. at the Flamingo Conference Resort and Spa. Teachers from across Sonoma County will be honored at the event. This year's nominee for the award from SRJC is Counselor Connie Gozzarino, so plan now to attend the partnership breakfast to honor Connie and other outstanding educators in our community.

Faculty and staff can make reservations by forwarding checks to the Public Relations Office before Monday, August 2. Make checks payable to the "Santa Rosa Chamber of Commerce" (on the notation line include "Partnership Breakfast"). Tickets are \$30 per person. Call ext. 4266 with questions. Make your reservations and send your checks before you break for summer!

## 26th Harvey Hansen Bar BQ Set Sept 10

To welcome new and returning employees to SRJC, the annual Harvey Hansen Bar BQ is scheduled at the Shone Farm the evening of September 10. The fun-filled event will have a luau theme this year. Look for details in upcoming issues of the *Insider*, but for now, mark your calendar and plan to attend this wonderful event.





## Career & Employment Center Seminars Fall 2010

The Career & Employment Center will present a series of fall seminars for students. Most are scheduled on the Santa Rosa Campus in the Career & Employment Center, third floor of the Bertolini Student Center; two will be held in Petaluma in Jacobs Hall.

### SEPTEMBER

**JOB SEARCH DISCUSSION GROUP**, Tuesday, Sept 7 – 2:00 – 3:00 PM, Petaluma Campus, John M. Jacobs Hall, PC 116

**JOB MARKET OUTLOOK**, Wednesday, Sept 22 – 2:00 – 3:30 PM, Doyle Library RM 4245, Teleconferenced to Mahoney Library Rm 726  
Making a career decision is an important decision, so it's important to understand how the local and global economy and changing trends affect job creation. The seminar will review current trends and share tools and resources to conduct your own research.

**CAREER CENTER ORIENTATION** Thursday, Sept 23 – 10:00 – 11:00 PM

To help navigate the resources available in Career Services, become acquainted with the computerized and library materials that help start a career search, skills upgrade, or research on current employment trends.

**STAYING MOTIVATED IN JOB SEARCH & LEVERAGING YOUR STRENGTHS**, Wednesday, Sept 29 – 1:30 – 3:00 PM,

Generate results with less effort. Attend this experiential seminar and learn how to strategize, set goals, generate momentum and keep yourself motivated in the job search.

### OCTOBER

**FOLLOW THE YELLOW BRICK ROAD – YOUR CAREER JOURNEY**, Thursday, Oct 7 – 10:30 – Noon,

This is an opportunity to examine where you have been on your career journey to see how those experiences affect the direction you take; valuable tips that help meet your career goals.

**RESUME WRITING, TUESDAY**, Oct 12 – 10:30 – Noon

Learn to prepare one of the most important marketing tools, a resume. An overview of various resume styles, tips on how to best highlight your experience and accomplishments to attract potential employers

**RESUME WRITING TUESDAY**, Oct. 19 – 2:00 – 3:00 PM, Petaluma Campus, John M. Jacobs Hall, PC 116

**CAREER CENTER ORIENTATION**, Wednesday, Oct 27 – 2:00 – 3:00 PM

Navigate the resources available in Career Services; learn about computerized and library materials that help start a career search, skills upgrade, or research on current trends.

### NOVEMBER

**CAREERS IN DIGITAL MEDIA**, Tuesday, Nov 2, 2:00 – 3:00 PM, Doyle Library RM 4245, Teleconferenced to Mahoney Library Rm 726

What digital media skills are in demand in the workplace? Learn to prepare for exciting, creative jobs like photographic editing, Web design, animation, and gaming.

**INNOVATION, THE MINDSET FOR SUCCESS THURSDAY**, Nov. 4 – 10:00 – 11:30 AM

The iPad, Wii, and iTunes, all innovative products that are changing our lives. Learn about the characteristics and behaviors an employee needs to be successful in the changing global economy.

SANTA ROSA JUNIOR COLLEGE MUSIC DEPARTMENT

S P R I N G  
2010  
C O N C E R T S

Parking For All SRJC Location Performances: \$4.00.  
Tickets Sold At The Door. Information: 707-527-4249.

### J U N E

#### SANTA ROSA SYMPHONIC CHORUS

*Directed by R. Daniel Earl*

Saturday, June 5 at 8 PM and Sunday, June 6 at 3 PM

Haydn's "Creation"

Santa Rosa High School Auditorium

Admission: \$15 General/\$10 Seniors

Tickets available online at  
[www.santarosasymphonicchorus.com](http://www.santarosasymphonicchorus.com)

[www.santarosa.edu/music](http://www.santarosa.edu/music)  
click on the CONCERT link for updates





## 4/10 Summer Hours Start

The District will implement the summer 4/10 schedule through July 30. The work week will be four days per week, Monday through Thursday. The schedule will be in effect until July 30, 2010. Employees need to work their full weekly FTE hours within this schedule or otherwise reduce their schedule according to the following information.

SRJC's public hours will not change

Offices should plan to be open between 8:00 AM and 5:00 PM, Monday through Thursday.

The College is closed Friday through Sunday.

Requests for exceptions to the normal public hours must be recommended to the employee's immediate supervisor and component administrator. If approved, the requests will be forwarded to HR.

Employees may access the full Summer Hours Agreement in Appendix G1 of the SEIU/District contract.

If you wish to work an alternative schedule, complete the "Summer 2010 Alternative Work Schedule Notice of Absences" form and submit it to your supervisor for approval, which must be submitted to HR before May 7, 2010. Report only your reduced hours for the summer 4/10 schedule. No form is required if an employee is working within the established summer work hours and their regular FTE.

Questions or more information, contact Danielle Donica at ext. 4785 or Linda Jay at ext. 4817.



## ATHLETIC SCHEDULES AND INFORMATION

[http://www.santarosa.edu/for\\_students/athletics/](http://www.santarosa.edu/for_students/athletics/)

## STAFF DIRECTORY ONLINE

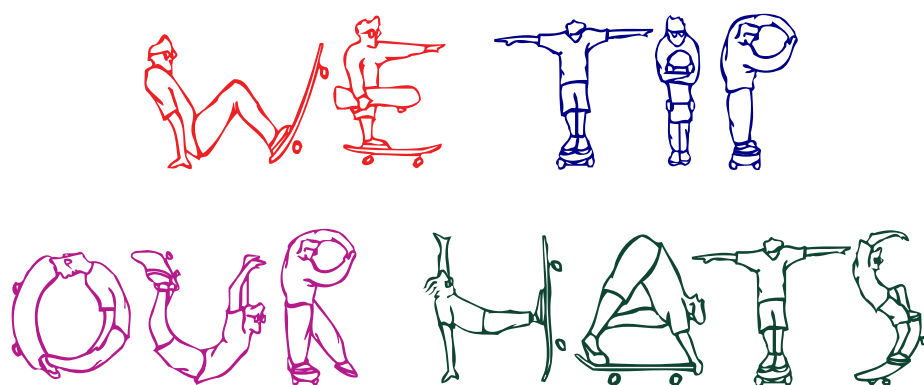
[http://www.santarosa.edu/faculty\\_staff/staff-directory/](http://www.santarosa.edu/faculty_staff/staff-directory/)

## CAMPUS MAPS

<http://www.santarosa.edu/map/>

## LIVE PERFORMANCES

<http://www.santarosa.edu/srjclive/index.php>



In late March, **REED MARTIN**, Theater Arts Adjunct Faculty Member and a member of The Reduced Shakespeare Company, completed a successful two-week engagement at the New Victory Theater in New York City. The Reduced Shakespeare Company also attended the "Shorty Awards" in Manhattan, where they won the prize for outstanding use of Twitter by a Cultural Institution.

### PLEASE NOTE:

**THIS IS THE LAST ISSUE OF THE INSIDER UNTIL  
MID AUGUST. HAVE A GREAT SUMMER!**

## 2010-2011 Theatre Arts Season

SRJC's Theatre Arts Department proudly  
announces a 2010-2011 season.

### **ANON(YMOUS)**

*by Naomi Iizuka*

A contemporary, multicultural  
retelling of The Odyssey.

### **WILLY WONKA**

*By Roald Dahl, Music and Lyrics by  
Leslie Bricusse & Anthony Newley*

This is the Gene Wilder movie...for the  
stage! The kids and the Oompa Loompas  
will be played by adults.

### **THE VOICE OF THE PRAIRIE**

*By John Olive*

An endearing tale of love  
and a celebration  
of the time of itinerant radio.  
This show will have a  
live Bluegrass band!

### **THE IMPORTANCE OF BEING EARNEST**

*By Oscar Wilde*

A 'trivial comedy for serious people,'  
this classic Comedy of Manners is  
unparalleled!

### **JESUS CHRIST SUPERSTAR**

*Lyrics by Tim Rice,*

*Music by Andrew Lloyd Webber*

The rock opera that rocked the '70s.  
Some of the male roles will be played by  
women playing male characters.



[www.santarosa.edu/insider/](http://www.santarosa.edu/insider/)

Published by the SRJC Public Relations Office  
(707) 527-4266

Board of Trustees: B. Robert Burdo, Richard W. Call,  
Donald Edgar, Jeff Kunde, W. Terry Lindley, Onita Pellegrini,  
Don Zumwalt, Ian Maurer - Student Trustee

Dr. Robert F. Agrella,  
SRJC President and District Superintendent

Susan Bagby Matthews, Public Relations Manager/Editor  
Mike Garcia, Graphic Designer/Coordinator  
Dana Throckmorton, Public Relations Assistant